



Schleifkopf / Diamond bit
1" = 25 mm

- 30 201 00** grob / rough
- 30 201 01** fein / fine
- 30 201 03** Power
- 30 201 04** Superpower
- 30 201 05** Turbo



Schleifkopf / Diamond bit
3/4" = 19 mm

- 30 202 00** grob / rough
- 30 202 01** fein / fine
- 30 202 03** Power
- 30 202 04** Superpower
- 30 202 05** Turbo



Schleifkopf / Diamond bit
5/8" = 16 mm

- 30 203 00** grob / rough
- 30 203 01** fein / fine
- 30 203 03** Power
- 30 203 04** Superpower



Schleifkopf / Diamond bit, 6 mm

- 30 204 00** grob / rough
- 30 204 01** fein / fine
- 30 204 03** Power
- 30 204 04** Superpower
- 30 204 05** mit Loch/ w/ hole
- 30 204 06** Turbo



Schleifkopf / Diamond bit, 3 mm

- 30 209 00** grob / rough
- 30 209 01** fein / fine
- 30 209 03** Power
- 30 209 04** Superpower



Schleifkopf, 16 mm,
für Schleifmaschine G51
Diamond bit, 16 mm, for grinder G51

- 30 205 00** grob / rough
- 30 205 01** fein / fine
- 30 205 03** Power
- 30 205 04** Superpower



Spiegelschleifer / Mirror bit, 25 mm

- 30 206 00** grob / rough
- 30 206 01** fein / fine



Spiegelschleifer / Mirror bit, 19 mm

- 30 207 00** grob / rough
- 30 207 01** fein / fine



Gehrungsschleifer / Lamp bit, 19 mm
9°, 18°, 3/4"

- 30 208 00** grob / rough
- 30 208 01** fein / fine



Entgrater / Deburrer, 35 mm

- 30 224 00** grob / rough
- 30 224 01** fein / fine



Rillenschleifer, diamant 25 mm, 1 mm
Grooving bit, diamond 25 mm, 1 mm

- 30 230 00**



Spiegelschleifer / Mirror bit, 10 mm

- 30 207 02** fein / fine



Facettschleifer, grob
Bevel bit, rough

| | | |
|------------------|-----|-------|
| 30 207 05 | 7° | 46 mm |
| 30 207 08 | 12° | 42 mm |
| 30 207 11 | 30° | 40 mm |
| 30 207 13 | 45° | 34 mm |

Facettschleifer, fein
Bevel bit, fine

| | | |
|------------------|-----|-------|
| 30 207 06 | 7° | 46 mm |
| 30 207 09 | 12° | 42 mm |
| 30 207 12 | 30° | 40 mm |
| 30 207 14 | 45° | 34 mm |

Facettschleifer, polierfein
Bevel bit, fine polish

| | | |
|------------------|-----|-------|
| 30 207 07 | 7° | 46 mm |
| 30 207 10 | 12° | 42 mm |



Glasbohrer mit Innenkühlung
für Bohrsystem
Drill bit with inner cooling
for drilling system

| | |
|------------------|---------|
| 30 250 03 | Ø 3 mm |
| 30 250 04 | Ø 4 mm |
| 30 250 05 | Ø 5 mm |
| 30 250 06 | Ø 6 mm |
| 30 250 08 | Ø 8 mm |
| 30 250 10 | Ø 10 mm |
| 30 250 12 | Ø 12 mm |
| 30 250 14 | Ø 14 mm |
| 30 250 16 | Ø 16 mm |
| 30 250 20 | Ø 20 mm |
| 30 250 25 | Ø 25 mm |
| 30 250 26 | Ø 26 mm |
| 30 250 28 | Ø 28 mm |
| 30 250 30 | Ø 30 mm |
| 30 250 35 | Ø 35 mm |
| 30 250 36 | Ø 36 mm |
| 30 250 40 | Ø 40 mm |
| 30 250 45 | Ø 45 mm |
| 30 250 50 | Ø 50 mm |
| 30 250 60 | Ø 60 mm |
| 30 250 65 | Ø 65 mm |
| 30 250 70 | Ø 70 mm |
| 30 250 80 | Ø 80 mm |



30 208 05
Schleifdorn,
Diamond bit,
2 mm + 6 mm
2 mm + 6 mm



Diamant Hohlbohrer mit Außen-
kühlung für Adapter 30 211 00
Diamond core drill bit with outer
cooling for adaptor 30 211 00

| | |
|------------------|---------|
| 30 215 00 | Ø 4 mm |
| 30 216 00 | Ø 6 mm |
| 30 216 10 | Ø 8 mm |
| 30 217 00 | Ø 10 mm |
| 30 217 05 | Ø 12 mm |
| 30 218 00 | Ø 15 mm |
| 30 218 05 | Ø 25 mm |



30 219 00
Aufnahmezapfen für Bohrmaschine
Adaptor for drilling machine



Schleifstift, für G51 6 mm
Diamond bit, for G51 6 mm
30 210 00 grob / rough
30 210 01 fein / fine
30 210 03 Power
30 210 04 Superpower



30 211 00
Adapter für diamant Schraub-
schleifstifte
Adaptor for threaded diamond bits

30 297 00
Ersatzschwamm Schleifmaschine
Replacement sponge for grinders

30 298 00
Inbusschlüssel für Schleifköpfe
Hexagon screw key

30 299 00
Madenschraube für Schleifköpfe
Mini screw for diamond bits

Schraubschleifdorn
für Adapter 30 211 00
Threaded diamond bit
for adaptor 30 211 00

| | | |
|------------------|--------------|------|
| 30 212 00 | grob / rough | 3 mm |
| 30 212 01 | fein / fine | 3 mm |
| 30 212 03 | Power | 3 mm |
| 30 212 04 | Superpower | 3 mm |

| | | |
|------------------|--------------|------|
| 30 213 00 | grob / rough | 6 mm |
| 30 213 01 | fein / fine | 6 mm |
| 30 213 03 | Power | 6 mm |
| 30 213 04 | Superpower | 6 mm |

| | | |
|------------------|--------------|-------|
| 30 214 00 | grob / rough | 10 mm |
| 30 214 01 | fein / fine | 10 mm |
| 30 214 03 | Power | 10 mm |
| 30 214 04 | Superpower | 10 mm |



30 218 05 Ø 25 mm



30 214 03 Power Ø 10 mm



GLASTAR Schleifdorn, 25 mm
Diamond bit, 1"
30 300 00 standard / standard
30 300 01 fein / fine

GLASTAR Schleifdorn, 19 mm
Diamond bit, 3/4"
30 302 00 Standard / standard
30 302 01 fein / fine

GLASTAR Schleifdorn, 16 mm
Diamond bit, 5/8" für / for G51
30 304 00 Standard / standard



GLASTAR Schleifdorn, Standard
Diamond bit, standard
30 306 00 6 mm / 1/4"
30 308 00 3 mm / 1/8"

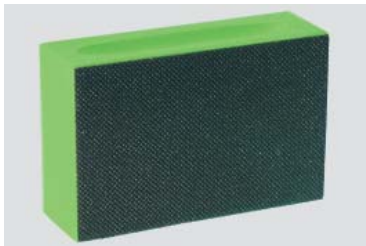


INLAND Schleifkopf, 19 mm
Diamond bit, 3/4"
30 400 00 standard / standard
30 400 01 fein / fine
30 400 04 speed / speed
30 400 05 super / super
30 400 07 rippel / ripple
30 400 08 lampen / lamps
30 400 11 super speed

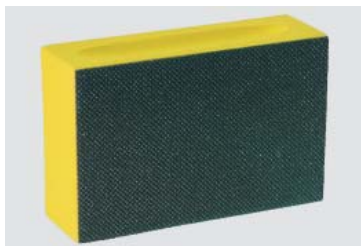
INLAND Schleifkopf, 25 mm
Diamond bit, 1"
30 401 00 Standard / standard
30 401 01 fein / fine
30 401 04 speed / speed
30 401 11 super / super



30 504 02
Diamant Schleifklotz 3M
Diamond grinding pad 3M
Rot / red 200er Körnung / Grit



30 504 00
Diamant Schleifklotz 3M
Diamond grinding pad 3M
Grün / green 70er Körnung / Grit



30 504 03
Diamant Schleifklotz 3M
Diamond grinding pad 3M
Gelb / yellow 380er Körnung / Grit



30 504 01
Diamant Schleifklotz 3M
Diamond grinding pad 3M
Schwarz / black 150er Körnung / Grit



30 504 05
Diamant Schleifklotz 3M
Diamond grinding pad 3M
Weiß / white 700er Körnung / Grit



30 307 00
GLASTAR-Dornadapter für
1/4", 1/8"
Adaptor for 1/4", 1/8"



INLAND Hohl Schleifdorn, 6 mm
Hollow diamond bit, 6 mm
30 406 00 standard / standard
30 406 01 fein / fine
30 406 03 speed / speed



30 501 00
Carborundum Glasfeile,
Carborundum glass file,
247 x 38 x 10 mm



30 502 00
Carborundum Handentgrater
(für 3 -15 mm Glass)
Carborundum deburrer,
(for 3 -15 mm glass)

30 502 10
Carborundum Ersatzstein
für Handentgrater
Replacement pulp stone for deburrer